

Image Search & Photobook Assist

A "Favorites" feature lets you give your images star ratings, while a convenient image search function lets you quickly and easily select photos based on any of several criteria. Pre-selecting your favorite pictures in the camera makes it easy to create your own personalized Photobook in just moments at your local Fujifilm photo center.



- by Face
- by Date
- by Scene
- by Type of Data
- by ★Favorites
- by Upload Mark

YouTube™ / FACEBOOK Uploader

Use the in-camera software to mark your photos or videos for YouTube™ or FACEBOOK, for effortless uploading of image data when the camera is connected to a PC running MyFinePix Studio.*

*included with camera



HDTV Compatible Photos and Videos



The FinePix S2950 captures both photos and movies in high definition 16:9 format, giving you the option of viewing images on HDTV in breathtaking high definition quality.

HDMI Mini Port

The FinePix S2950 features a mini HDMI port, for quick and easy connection to your HDTV.*

*Please use commercially available HDMI cable for HDTV connection.



SPECIFICATIONS

Number of effective pixels ^{#1}	14.0 million pixels
CCD sensor	1/2.3-inch CCD with primary color filter
Storage media	SD memory card / SDHC memory card ^{#2}
File format	Still image: JPEG (Exif Ver. 2.3 ^{#3}) / Movie: AVI (Motion JPEG) with Sound / Audio: WAVE format, Monaural sound (Design rule for Camera File system compliant / DPOF-compatible)
Number of recorded pixels	L: 4:3 (4,288 × 3,216) / 3:2 (4,288 × 2,864) / 16:9 (4,288 × 2,416) M: 4:3 (3,072 × 2,304) / 3:2 (3,072 × 2,048) / 16:9 (3,072 × 1,728) S: 4:3 (2,048 × 1,536) / 3:2 (2,048 × 1,360) / 16:9 (1,920 × 1,080)
Lens	Fujinon 18× optical zoom lens, F3.1 (Wide) - F5.6 (Telephoto)
Lens focal length	f=5.0 - 90.0 mm, equivalent to 28 - 504 mm on a 35 mm camera
Digital zoom	Approx. 6.7× (up to approx. 120.6×, with 18× optical zoom)
Aperture	Wide: F3.1 / F6.4, Telephoto: F5.6 / F11 with ND filter
Focus distance (from lens surface)	Normal: (Wide) Approx. 40 cm (1.3 ft.) to infinity, (Telephoto) Approx. 2.5 m (8.2 ft.) to infinity Macro: (Wide) Approx. 5 cm - 3.0 m / 2.0 in. - 9.8 ft., (Telephoto) Approx. 1.8 m - 3.0 m / 5.9 ft. - 9.8 ft., Super Macro: Approx. 2 cm - 1.0 m / 0.8 in. - 3.3 ft.
Sensitivity	Auto, Auto (400), Auto (800), / Equivalent to ISO 64 / 100 / 200 / 400 / 800 / 1600 / 3200* / 6400* (Standard Output Sensitivity) *ISO 3200 / 6400: 3M or lower (Number of recorded pixels)
Shooting modes	Mode dial: SR AUTO (Scene Recognition), AUTO, P, S, A, M, Custom, Movie, Panorama, SP SP: Natural Light, Natural Light & with Flash, Portrait, Landscape, Sport, Night, Night (Tripod), Fireworks, Sunset, Snow, Beach, Party, Flower, Text, Smile, Zoom bracketing, Baby
Shutter speed	(Auto mode) 1/4 sec. to 1/2000 sec. (All other modes) 8 sec. to 1/2000 sec.
LCD monitor	3.0-inch, Approx. 230,000 dots, TFT color LCD monitor, Approx. 97% coverage
Movie recording	1280 (1280 × 720: HD), 640 (640 × 480: VGA), 320 (320 × 240: QVGA) / (30 frames/sec.) with monaural sound (Zoom function can be used during movie recording)
Power supply ^{#4}	4 x AA type alkaline batteries (included) / 4 x AA type Ni-MH rechargeable batteries (sold separately) / 4 x AA type lithium batteries (sold separately) / DC coupler CP-04 with AC power adapter AC-SVX (sold separately)
Dimensions	110.2 (W) × 73.4 (H) × 81.4 (D) mm / 4.3 (W) × 2.9 (H) × 3.2 (D) in.
Weight	Approx. 341 g / 12.0 oz. (excluding accessories, battery and memory card)

^{#1}: Number of effective pixels: The number of pixels on the image sensor which receive input light through the optical lens, and which are effectively reflected in the final output data of the still image.

^{#2}: Please see the Fujifilm website to check memory card compatibility.

^{#3}: Exif 2.3 is a digital camera file format that contains a variety of shooting information for optimal printing.

^{#4}: Manganese dry and nickel-cadmium batteries cannot be used with this product.



For more information, please visit our Website:
http://www.fujifilm.com/products/digital_cameras/index.html

Specifications are subject to change without notice.
All sample photos are simulated images.

FUJIFILM
FUJIFILM Corporation

Ref. No. EB-1033E (SK-10-12-F1120-F9711) Printed in Japan©2010 FUJIFILM Corporation

FUJIFILM

FINEPIX S2950



18x long-zoom bridge camera

14 Megapixels | Fujinon 18x Optical Zoom | 3.0-inch LCD



FinePix. More than you imagined.

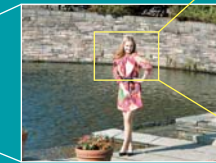


Fujinon 18x Zoom Lens

Equipped with a versatile 18x zoom, the FinePix S2950 lets you zoom right in to capture your subject with picture-perfect results.



28mm Wide Angle



5x Optical Zoom



18x Optical Zoom



14 Megapixels

The FinePix S2950 captures ultra high-resolution photos and videos, great for enlarged prints or big-screen display.

3.0-inch LCD & EVF

A bright 3-inch LCD screen makes composing and viewing images a pleasure. And to accommodate more traditional shooting styles, the FinePix S2950 is also equipped with a crisp, clear electronic viewfinder.

SR AUTO AUTO with Automatic Red-Eye Removal

The FinePix S2950 automatically recognizes six of the most commonly photographed scenes and optimizes camera settings for beautiful results every time. And red-eye removal eliminates unsightly red-eye reflections to ensure flattering flash portraits and party pictures.



Portrait



Macro

Natural Light & with Flash

Not sure whether you need the flash? Natural Light & with Flash takes two photos in quick succession, one with flash and one without, eliminating the guesswork of flash photography.



Natural Light (flash off)

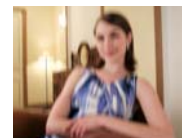
&



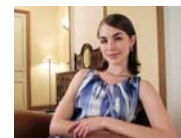
With Flash

Dual Image Stabilization

No more blurred and disappointing photos! Combining CCD-shift image stabilization with high sensitivity, the FinePix S2950 greatly reduces the effects of camera shake and subject blur to deliver crisp, clear shots across the entire zoom range.



Conventional digital camera



FinePix S2950

Motion Panorama Mode

Take impressive panorama photos as simply as "1", "2", "3"! The FinePix S2950 automatically stitches together three consecutive shots, with simple in-frame guidance to ensure the images are aligned.



Instant Zoom

A selectable frame on the LCD screen lets you bracket and track moving subjects in standard wide view.

Zoom Bracketing

Take three shots at varying degrees of magnification (original, 1.4x, 2.0x) with a single press of the shutter button.

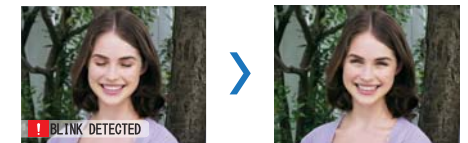
Smile & Shoot Mode

In "Smile & Shoot" mode, the FinePix S2950 automatically triggers the shutter button and takes a photo when a smile is detected, giving you portraits to smile about.



Blink Detection

In this mode, the FinePix S2950 warns you when people in the frame blink, giving you the option to retake the photo, or enlarge the face so you can save or delete before you take the next shot.



Tracking AF

Great for capturing dynamic close-ups, this function keeps fast moving subjects in the frame and in focus, even when the zoom is fully extended.

