

FUJIFILM

Ultra-fast response
captures more of the moment



42x
Manual Zoom



HS50EXR

50x
Power Zoom



SL1000

40x
Power Zoom



S8200

FINEPIX SUPER LONG ZOOM

From wide-angle to zoom, macro and Full HD video recording. All in a single camera!

Brought to you by the long-zoom
digital camera experts at FUJIFILM.

"I want to take the kind of photos that are only possible with a real camera."
"...but I really don't want to have to carry around a bag full of lenses."
The popularity of FUJIFILM's super long zoom cameras has been fuelled
by the demand for all-in-one cameras that offer high-end photographic
features and top quality optics.
Choose from the FinePix HS, SL or S series cameras with their advanced
FUJINON lens technology.



Clear, blur-free images even at maximum zoom range



- All models feature OIS (optical image stabilization). This ensures that blur caused by camera shake—a common problem when using a high-power zoom—is substantially reduced.
- All models feature high precision FUJINON lenses. Aspherical and ED lens elements contribute to high-quality imaging with minimum distortion. FUJINON's original Super EBC multilayer lens coating reduces ghosting and flaring for clear images even in the most challenging conditions.

Zoom

High-power zoom lenses of at least
40x magnification let you zoom in on
those smiling faces.



Wide

24mm wide-angle takes in
expansive scenery just
as it appears to the naked eye.



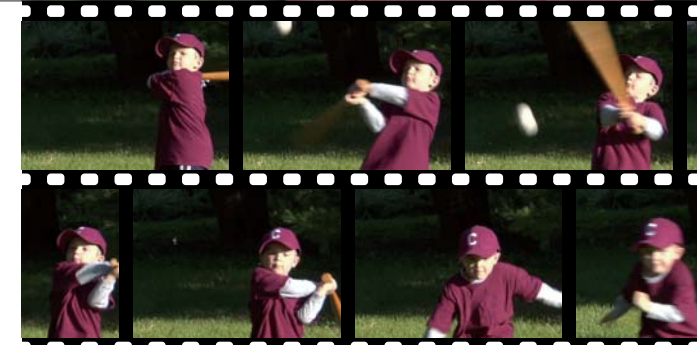
Macro

Macro close-ups
from as near as 1cm capture flowers
in all their bold and vivid beauty.



Movie

Full HD Movie recording
produces beautiful movies with
impressive sound.



A new manual zoom lens,
a new sensor and a new processor ensure fast framing
and world's fastest AF 0.05 sec.*1



FINEPIX HS50 EXR

42x Zoom	16M EXR CMOS II	3.0-inch 920K-dot Vari-Angle LCD	920K-dot EVF with Eye Sensor	OIS (Lens Shift)	RAW	FULL HD MOVIE
----------	-----------------	----------------------------------	------------------------------	------------------	-----	---------------

- 42x manual zoom (f/2.8-5.6, 24-1000mm²) with optical image stabilization (Lens Shift)
- 1/2" EXR CMOS II sensor & EXR Processor II
 - Intelligent Hybrid AF; 0.05 sec.*1
 - Continuous shooting; 11 fps at Full Resolution (MAX. 5 frames), 5.5 fps at 8M for seamless capture*3
 - 108 EXR Auto shooting patterns
- Full HD Movie 1080p/60fps with continuous phase detection AF and stereo sound
- Vari-Angle LCD (920K-dot) & High resolution EVF (920K-dot) with Eye Sensor
- Q button for direct control of settings
- Super Macro; 1cm
- Manual exposure control (P/S/A/M modes)
- Shooting functions; Advanced filter (8 effects), Film simulation, Multiple exposure and more.

For more information



Optional Accessories

·Flash Shoe Mount Flash EF-42/EF-20/EF-X20	·Microphone Stereo microphone MIC-ST1	·Release Remote Release RR-80A	·Filter Protector Filter PRF-58	·Battery Li-ion Battery NP-W126
--	---	--------------------------------------	---------------------------------------	---------------------------------------

*1 Fujifilm research as of 30, November 2012. Compared with other compact digital cameras based on CIPA standards and conducted in High Performance mode.
*2 35mm format equivalent *3 Fujifilm research based on CIPA standards

42x Manual Zoom

The newly developed Fujinon optical 42x manual zoom lens (24 - 1000mm²) effectively combines aspherical lenses, ED lens, and integrated lenses to achieve a bright aperture rating of f/2.8 - 5.6, and powerful image stabilization. Super Macro mode allows close-up shooting from as near as 1cm and the manual barrel zoom ensures speedy, intuitive control of the camera.



Vari-Angle LCD & EVF

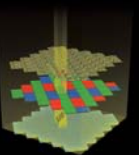
The 920,000-dot Vari-Angle LCD facilitates flexible photo & movie shooting much like a video camera: super-low-angle shooting from the ground up, high-angle shots with the camera held high, and even self-portraits. The incredibly sharp EVF (electronic viewfinder) offers an identical high resolution of 920,000-dot, ensuring stable framing. The EVF features a convenient eye sensor that automatically switches the image display between the EVF and the LCD.



Phase-detection AF delivers unmatched speed

New Intelligent Hybrid AF auto focuses in as fast as 0.05 sec.*1 thanks to EXR CMOS II

Depending on the scene, Hybrid AF instantly switches between high-speed phase detection AF (found in most top-end SLRs), and contrast AF, which is employed when high contrast light is present. Applying the fastest algorithm according to the targeted subject and scene, Hybrid AF guarantees your subject will be in focus as quickly as possible (fastest 0.05 sec.*1), ensuring your shots are captured perfectly.



Enormous zoom range from wide-angle 24mm to super-telephoto 1200mm*1.



FINEPIX SL1000

50x Zoom	16M BSI-CMOS	3.0-inch 920K-dot Tilting LCD	920K-dot EVF with Eye Sensor	OIS (Lens Shift)	Dual Zoom Lever	RAW	FULL HD MOVIE
----------	--------------	-------------------------------	------------------------------	------------------	-----------------	-----	---------------

- 50x power zoom (24-1200mm*1) with optical image stabilization (Lens Shift)
- 16M BSI-CMOS; AF 0.2 sec.*2, continuous shooting 10 fps at Full Resolution (MAX. 9 frames)*2
- Full HD Movie 1080i/60fps with stereo sound
- EVF (920K-dot) with Eye Sensor & High resolution (920K-dot) Tilting LCD
- Hot-shoe
- Super Macro; 1cm
- Instant zoom & Zoom Bracketing
- 3-level zoom speed switch
- Manual exposure control (P/S/A/M modes)
- Shooting functions; Advanced filter (7 effects), HDR, Individual shutter 3D and more.

For more information

Optional Accessories

·Flash Shoe Mount Flash EF-42/EF-20/EF-X20		·Battery Li-ion Battery NP-85
--	--	-------------------------------------

*1 35mm format equivalent
*2 Fujifilm research based on CIPA standards

40x zoom with a bright, easy-to-see EVF



FINEPIX S8200

40x Zoom	16M BSI-CMOS	3.0-inch 460K-dot LCD
200K-dot EVF	OIS (Lens Shift)	Dual zoom Lever



- 40x power zoom (24-960mm*1) with optical image stabilization (Lens Shift)
- 16M BSI-CMOS; AF 0.3 sec.*2, continuous shooting 10 fps at Full Resolution (MAX. 10 frames)*2
- Full HD Movie 1080i/60fps with stereo sound
- EVF (200K-dot)
- Super Macro; 1cm
- Instant zoom & Zoom Bracketing
- 3-level zoom speed switch
- Manual exposure control (P/S/A/M modes)
- Shooting functions; Advanced filter (6 effects), HDR, Individual shutter 3D and more.




Black Red White

For more information

*1 35mm format equivalent *2 Fujifilm research based on CIPA standards



SPECIFICATIONS

	HS50 EXR	SL1000	S8200
Number of effective pixels*1	16 million pixels	16 million pixels	16 million pixels
Image sensor	1/2-inch EXR CMOS II with primary color filter	1/2.3-inch CMOS with primary color filter	1/2.3-inch CMOS with primary color filter
Lens	f=4.4-185mm, equivalent to 24-1000mm on a 35mm format (F2.8-5.6)	f=4.3-215.0mm, equivalent to 24-1200mm on a 35mm format (F2.9-6.5)	f=4.3mm-172.2mm, equivalent to 24-960mm on a 35mm format (F2.9-6.5)
Aperture	F2.8-F11 (Wide) F5.6-F11 (Telephoto) 1/3EV step	F2.9/F8.4 (Wide) F6.5/F7.8/F19 (Telephoto) with ND filter	F2.9/F8.4 (Wide) F6.5/F7.6/F18.7 (Telephoto) with ND filter
Sensitivity	Auto, Equivalent to ISO 100/200/400/800/1600/3200/6400*12800* (Standard Output Sensitivity) *ISO 6400: M mode or lower, ISO 12800: S mode		AUTO(400)/AUTO(800)/AUTO(1600), Equivalent to ISO 64/100/200/400/800/1600/ 3200/6400/12800 (Standard Output Sensitivity)
Image Stabilizer	OIS (Lens Shift)	OIS (Lens Shift)	OIS (Lens Shift)
LCD	3.0-inch 920K-dot Vari-angle LCD	3.0-inch 920K-dot Tilting LCD	3.0-inch 460K-dot LCD
Movie Recording	 1080p/60fps	 1080i/60fps	 1080i/60fps
Battery *2	Li-ion Battery 500 Shots	Li-ion Battery 350 Shots	4x AA type alkaline batteries 300 Shots*3
Dimensions	134.9 (W) x 101.3 (H) x 145.9 (D) mm / 5.3 (W) x 4.0 (H) x 5.7 (D) in.	122.7 (W) x 88.6 (H) x 122.6 (D) mm / 4.8(W) x 3.4(H) x 4.8(D) in.	122.6 (W) x 86.9 (H) x 116.2(D) mm / 4.8(W) x 3.4(H) x 4.5(D) in.
Weight	Approx. 808g / 28.5 oz. (including battery and memory card)	Approx. 659g / 23.2 oz. (including battery and memory card)	Approx. 670g / 23.6 oz. (including battery and memory card)

*1: Number of effective pixels: The number of pixels on the image sensor which receive input light through the optical lens, and which are effectively reflected in the final output data of the still image.

*2: Fujifilm research based on CIPA standards.

*3: Manganese dry and nickel-cadmium batteries cannot be used with this product.



Microsoft, Windows and Windows logo are trademarks, or registered trademarks of Microsoft Corporation in the United States and/or other countries.

Macintosh and Mac OS are trademarks of Apple Computer, Inc., registered in the U.S. and other countries.

HDMI, the HDMI logo, and High-Definition Multimedia Interface are either trademarks or registered trademarks of HDMI Licensing.

SD logo is a trademark. All other trademarks are the property of their respective holders.

For more information, please visit our Website:
http://www.fujifilm.com/products/digital_cameras/index.html

Specifications are subject to change without notice.
All sample photos are simulated images.