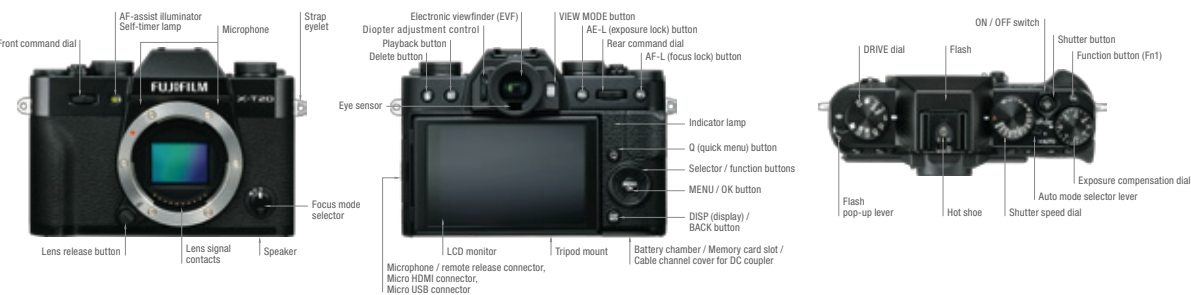


## FUJIFILM X-T20 Specification

Model name	FUJIFILM X-T20
Number of effective pixels	24.3 million pixels
Image sensor	23.6mm×15.6mm (APS-C) X-Trans CMOS III with primary color filter.
Sensor Cleaning System	Ultra Sonic Vibration
Storage media	SD Card (-2GB) / SDHC Card (-32GB) / SDXC Card (-256GB) UHS-I*
File format	Still Image: JPEG: Exif Ver 2.3 <sup>1)</sup> , RAW: 14bit RAW (RAF original format), RAW+JPEG Movie: MOV (MPEG-4 AVC / H.264, Audio: Linear PCM / Stereo sound 48kHz sampling)
Number of recorded pixels	L: <3:2> 6000×4000 / <16:9> 6000×3376 / <1:1> 4000×4000 M: <3:2> 4240×2832 / <16:9> 4240×2384 / <1:1> 2832×2832 S: <3:2> 3008×2000 / <16:9> 3008×1688 / <1:1> 2000×2000 <Panorama> L: 2160×9600 (Horizontal: 9600×1440) M: 2160×6400 (Horizontal: 6400×1440)
Lens Mount	FUJIFILM X mount
Sensitivity	Standard Output: AUTO1 / AUTO2 / AUTO3 (up to ISO12800) / ISO200-12800 (1/3EV step) Extended Output: ISO100 / 25600 / 51200
Exposure control	TTL 256-zone metering, Multi / Spot / Average / Center Weighted
Exposure mode	P (Program AE) / A (Aperture Priority AE) / S (Shutter Speed Priority AE) / M (Manual Exposure)
Exposure compensation	-5.0EV~+5.0EV 1/3EV step (Movie: -2.0EV~+2.0EV)
Image Stabilizer	Supported with OIS type lenses
Shutter type	Focal Plane Shutter
Shutter speed	Mechanical Shutter: 4sec.~1/4000sec. (P mode), 30sec.~1/4000sec. (All modes) Bulb mode (up to 60min.), TIME: 30sec.~1/4000sec. Electronic Shutter <sup>2)</sup> : 4sec.~1/4000sec. (P mode), 1sec.~1/32000sec. (P/A/S/M modes) Bulb mode: 1sec. fixed, TIME: 1sec.~1/32000sec. Mechanical + Electronic Shutter: 4sec.~1/32000sec. (P mode), 30sec.~1/32000sec. (All modes) Bulb mode (up to 60min.), TIME: 30sec.~1/32000sec. Synchronized shutter speed for flash: 1/180sec. or slower
Continuous shooting	Approx. 14.0fps (Only Electronic Shutter) (JPEG: 42 frames Lossless compression RAW: 23 frames Uncompressed RAW: 22 frames) Approx. 11.0fps (Only Electronic Shutter) (JPEG: 56 frames Lossless compression RAW: 24 frame Uncompressed RAW: 23 frames) Approx. 8.0fps (JPEG: 62 frames Lossless compression RAW: 25 frame Uncompressed RAW: 23 frames) Approx. 5.0fps (JPEG: 68 frames Lossless compression RAW: 28 frame Uncompressed RAW: 25 frames) Approx. 4.0fps (JPEG: 73 frames Lossless compression RAW: 29 frame Uncompressed RAW: 25 frames) Approx. 3.0fps (JPEG: 81 frames Lossless compression RAW: 32 frame Uncompressed RAW: 27 frames) * Recordable frame depends on recording media. * Speed of continuous shooting depends on shooting environment and shooting frames.
Auto bracketing	AE Bracketing (±2EV, ±5/3EV, ±4/3EV, ±1EV, ±2/3EV, ±1/3EV) Film Simulation Bracketing (Any 3 types of film simulation selectable) Dynamic Range Bracketing (100%, 200%, 400%) ISO sensitivity Bracketing (±1/3EV, ±2/3EV, ±1EV) White Balance Bracketing (±1, ±2, ±3)
Focus	Mode: Single AF / Continuous AF / MF Type: Intelligent Hybrid AF (TTL contrast AF / TTL phase detection AF), AF assist illuminator available AF frame selection: Single point AF: EVF/LCD: 13×7 / 25×13 (Changeable size of AF frame among 5 types) Zone AF: 3×3 / 5×5 / 7×7 from 91 areas on 13×7 grid Wide/Tracking AF: (up to 18 area) *AF-S, Wide *AF-C, Tracking
White balance	Automatic scene recognition / Custom / Color temperature selection (K) / Preset: Daylight, Shade, Fluorescent light (Daylight), Fluorescent light (Warm White), Fluorescent light (Cool White), Incandescent light, Underwater
Self-timer	10sec. / 2sec.
Interval timer Shooting	YES Setting: Interval, Number of shots, Starting time
Flash	Manual pop-up flash (Super Intelligent Flash) Guide Number: approx. 7 (ISO200-m) / approx. 5 (ISO100-m)
Flash modes	Sync. Mode: TTL FLASH AUTO / STANDARD / SLOW SYNC. / MANUAL / COMMANDER / OFF 1ST CURTAIN / 2ND CURTAIN

\*1 Please see the Fujifilm website to check memory card compatibility. \*2 Exif 2.3 is a digital camera file format that contains a variety of shooting information for optimal printing. \*3 The Electronic Shutter may not be suitable for fast-moving objects. Flash can not be used. \*4 Digital Split Image is a trademark or a registered trademark of FUJIFILM Corporation. \*5 Approximate number of frames / period that can be taken with a fully-charged battery based on CIPA standard.

## Parts of the Camera



**FUJIFILM**  
Value from Innovation

X-T20

QUALITY  
ON  
EVERY  
SHOT



<http://fujifilm-x.com/x-t20/>

To ensure correct usage, read owner's manual carefully before using your equipment. All photos, illustrations, drawings and other images in this brochure are intended for illustrative purposes only.

SDXC logo is a trademark. All other trademarks are the property of their respective holders. SILKPIX® is a registered trademark of Ichikawa Soft Laboratory Co., Ltd. in Japan.



Specifications are subject to change without notice

For more information, please visit our website

[http://www.fujifilm.com/products/digital\\_cameras/index.html](http://www.fujifilm.com/products/digital_cameras/index.html)

**FUJIFILM**  
FUJIFILM Corporation

©2017 FUJIFILM Corporation





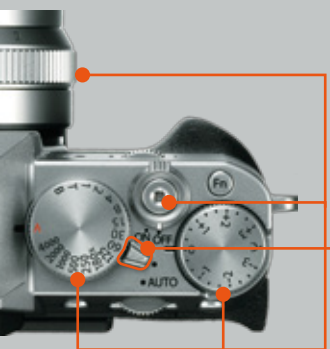
Turn the dials. Look through the viewfinder. Shoot in stunning colors. Capture the moment... The X-T20 packs the latest technology into its beautifully designed compact and lightweight body so you get the most from your photography whatever you choose to shoot. It offers a full Manual Mode for creative control and a handy Auto Mode that makes it simple to capture a wide range of scenes. These two modes combine with the tilting LCD monitor and touch screen operation for intuitive shooting, plus the X-T20 also offers high-quality 4K video to capture precious occasions in superb detail. Perfect for experienced enthusiasts and beginners alike, the X-T20 will help you enjoy photography every day.

*quality on every shot*





# EXPLORE YOUR CREATIVITY CONTROL MODE



CONTROL MODE

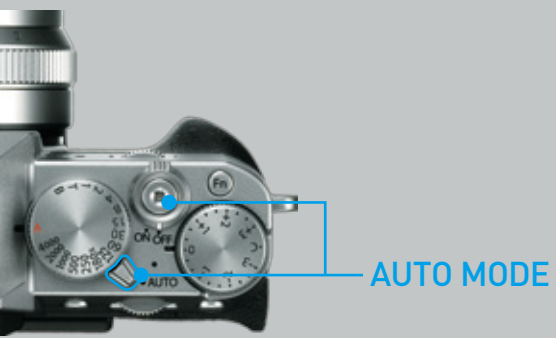
Capture images exactly as you see them with dial-based controls and a variety of exposure modes.

The compact and lightweight camera body, which sits comfortably in your hand, is both fun and simple to use. The X-T20 offers fully manual operation thanks to a shutter speed dial, exposure compensation dial, drive dial and other controls that have become synonymous with the X Series. Combinations of settings on the shutter speed dial and the lens's aperture ring allow you to set exposure modes including program, shutter priority, aperture priority and manual even when the camera is turned off. The exposure compensation dial enables compensation of up to  $\pm 3$  stops in  $1/3$  steps; putting the dial to the "C" position allows exposure compensation of up to  $\pm 5$  stops using the front command dial. Exposure can be precisely adjusted while checking the effect on the EVF.





# EXPRESS YOUR FEELINGS AUTO MODE



## Advanced SR AUTO for intelligent, fully-automatic shooting.

Set the Auto Mode Switch on the top plate to "AUTO" to select the Advanced SR AUTO mode. The camera will then automatically select the optimum autofocus and exposure settings from 58 presets, including "Landscape", "Night Landscape", "Beach", "Sunset", "Blue Sky", "Portrait" and "Moving Subject". All you have to do is press the shutter release. This mode is perfect for situations where it is difficult to choose the right exposure settings or when you just want to take quick shots. You can also select a specific preset of your choice.







# ELECTRONIC VIEWFINDER

## High-precision, high-magnification EVF.

The X-T20 features a 2.36M-dot organic EL electronic viewfinder. It uses four dedicated lens elements for a clear, high resolution image showing 100% of the image area that can be viewed even in bright outdoor conditions. The EVF has a smooth display thanks to a frame rate of 54.54fps and a time-lag of 0.005sec. It also shows the effects of Film Simulation and exposure settings in real time, so you can take photos knowing exactly how the image will turn out. This capability to reflect settings can be turned on and off; when turned off, the view replicates natural tones exactly as if viewed by the naked eye.

X-T20 electronic viewfinder



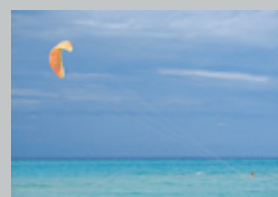
Viewfinder size comparison



Viewfinder features four lens elements

## Automatic brightness control and EVF customization.

EVF brightness is automatically controlled according to the shooting conditions for maximum viewing comfort. All the items displayed in the viewfinder can be turned ON or OFF for a customized view.



## 1.04M-dot tilting LCD monitor.

The X-T20 features a 3.0-inch 1.04M-dot tilting TFT color LCD monitor with a 3:2 aspect ratio. The dot count is the same as the LCD monitors used in flagship models. It's easy to view, even in bright outdoor conditions, making it comfortable to shoot both stills and video. The monitor tilts up and down allowing you to shoot while holding the camera at waist level or from high/low angles. All shooting information displayed in the LCD monitor can be turned off if you want to concentrate on your subject and the LCD monitor sits flush to the body when not in use, so it doesn't compromise the X-T20's sleek lines.



## Intuitive touch screen operation.

While shooting, the X-T20's touch screen can be used for "Touch Focus", "Focus Area Selection" and "Touch Shot". During playback, intuitive controls include swiping the screen to fast-forward video, and double-tapping it to zoom in and out.



# TILTING LCD & TOUCH SCREEN MONITOR

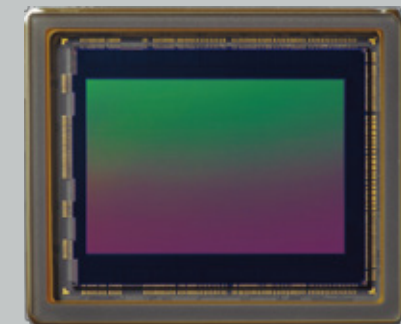




# SENSOR PROCESSOR

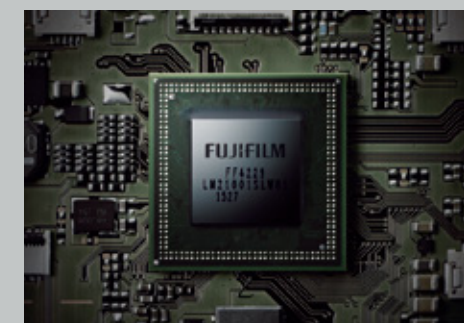
## **X-Trans CMOS III sensor for high quality image.**

The X-T20 features Fujifilm's X-Trans CMOS III, a 24.3-megapixel APS-C sized sensor renowned for outstanding image quality when combined with high performance XF lenses. Thanks to its random pixel array, the sensor cuts out moiré and false colors without needing an optical low-pass filter, plus it delivers impressive noise reduction up to ISO12800. The sensor also offers excellent read speed, helping to improve the camera's response in the burst mode, high-accuracy AF tracking, high-speed live view and high-quality video performance.



## **X-Processor Pro with advanced image processing capability.**

The X-T20's X-Processor Pro image processing engine delivers a processing speed roughly 4x faster than previous models. The increased buffer memory boosts performance, drawing out the best from the X-Trans CMOS III sensor. This means that ACROS has now been added to the popular set of Film Simulation modes, which are available for both stills and 4K video. X-Processor Pro also enhances overall performance with shorter shooting intervals, shutter release time lag and blackout time, as well as improving AF accuracy and the number of continuous frames possible in the burst mode.



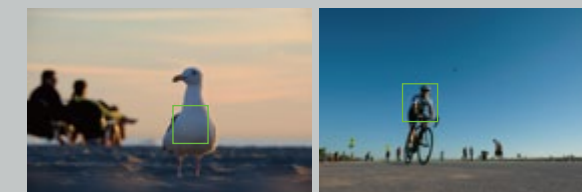


# AUTO FOCUS PERFORMANCE



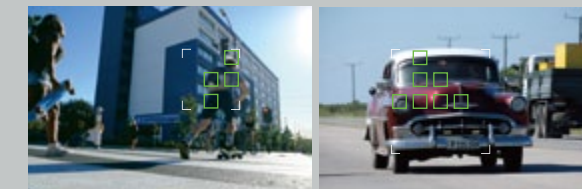
## Versatile AF modes.

Choose between 91 or 325 focus points. The faster and more accurate phase detection pixels cover 50% (side-to-side) and 75% (top-to-bottom) of the frame. The camera offers Single Point AF for accurate focus on a selected focus point, Zone AF for a moving subject and Wide/Tracking AF. These modes are complemented by Face Detection/Eye Detection AF and manual focus modes, which give you a truly versatile range of options to choose from.



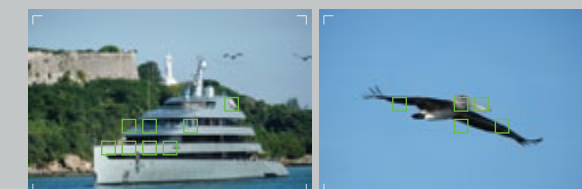
AF-S + Single Point

AF-C + Single Point



AF-S + Zone

AF-C + Zone

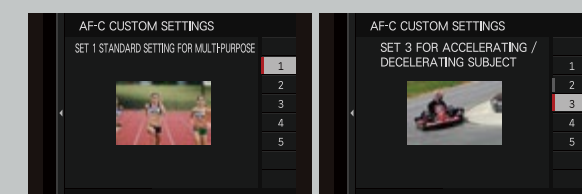


AF-S + Wide

AF-C + Tracking

## AF-C custom settings optimized for different types of movement

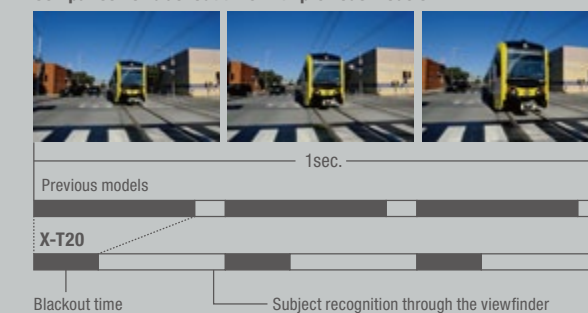
The X-T20 offers AF-C presets for a variety of different subjects to make it easier to accurately track a moving subject. The camera offers five presets with optimized parameters, including Ignoring Obstacles and Accelerating / Decelerating subjects.



## 8.0fps continuous shooting and reduced blackout time

The X-T20 boasts continuous shooting at 8.0fps when using the mechanical shutter and 5.0fps in the Live View mode. Its blackout time has been substantially reduced from previous models, allowing extended continuous shooting while following your subject in the viewfinder. In CH mode, you can write up to 62 JPEG images continuously.

### Comparison of blackout time with previous models







# ADDITIONAL FUNCTIONS



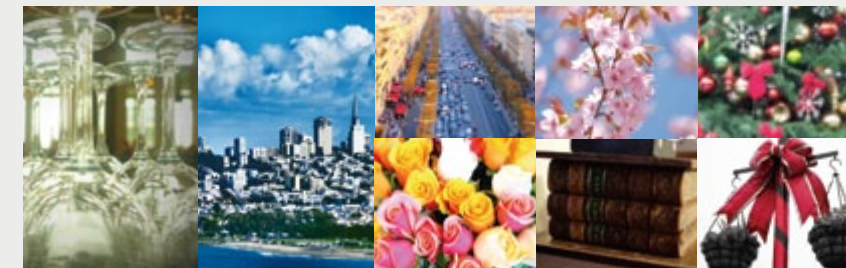
## Multiple Exposures

The X-T20 allows you to combine two frames for an artistic effect. The first shot is displayed on the LCD monitor so it can be seamlessly blended with the second frame.



## Panorama

Pan the camera using the on-screen guide to shoot several frames and the X-T20 will merge them into an amazing panoramic image. You can choose between L for a 180-degree shot and "M" for a 120-degree shot.



## Advanced Filters

Apply various filter effects to create unique images. 8 effects are available, including Toy Camera for a retro look, Miniature for a diorama effect, Pop Color for high contrast and saturation, as well as High Key, Low Key, Dynamic Tone, Soft Focus and Partial Color (Red, Orange, Yellow, Green, Blue and Purple). All effects can be previewed as you shoot on the LCD screen.



## Interval Timer shooting

Shoot the same subject from a fixed point or try time lapse photography with settings including shooting interval (1 sec - 24 hours), total number of frames (1 - ∞), and a self-timer for setting when to start a time lapse (1 minute later - 24 hours).

# MOVIE

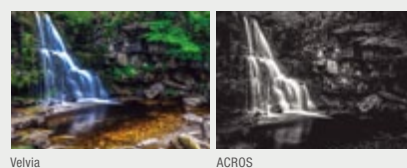
## Incredible 4K video

In addition to conventional Full HD video, the X-T20 also supports 4K video for amazing movie quality with minimal moiré and artifacts. The camera accepts both an HDMI monitor and an external microphone for full-scale video productions.



## Film Simulation modes for video

Film Simulation modes are available even while recording 4K video. Enjoy versatile video effects, including monochrome video with ACROS, and documentary-themed tones with CLASSIC CHROME. You can also change settings such as aperture and exposure compensation during recording.



## Bracketing

The Bracketing mode, which takes three frames at different settings with a single press of the shutter release, is not only available for the common auto exposure bracketing, but also for white balance, dynamic range, Film Simulation and ISO sensitivity.



## Super Intelligent Flash

The X-T20's pop-up flash uses Fujifilm's original TTL flash control technology (Super Intelligent Flash) to automatically adjust light output according to the shooting conditions. The camera also supports optional TTL flashguns.



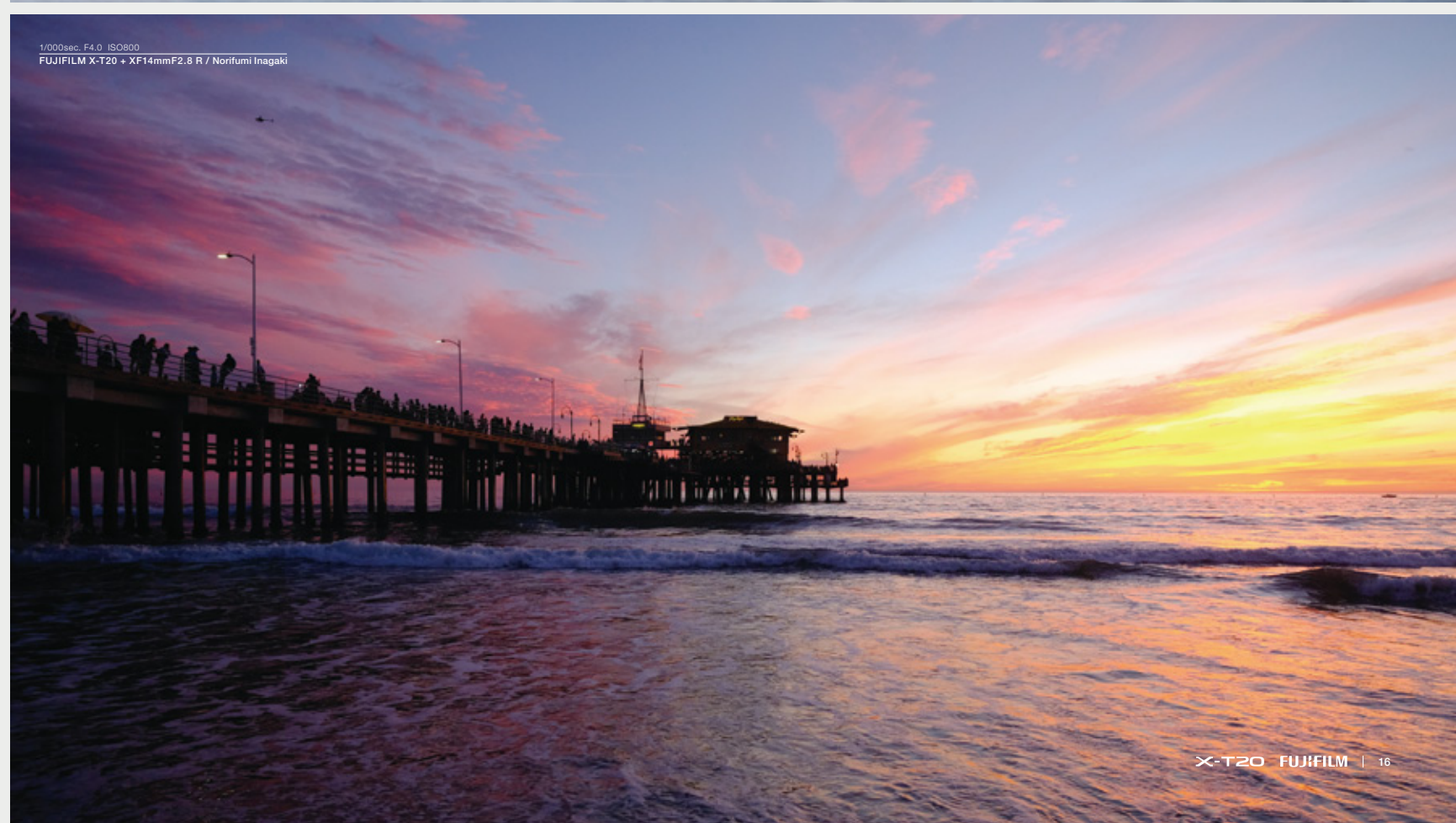
## Wireless communication

Install the free FUJIFILM Camera Remote app on your smartphone or tablet to remotely control the camera or view and transfer in-camera images.



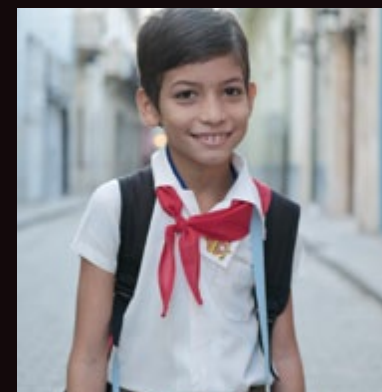
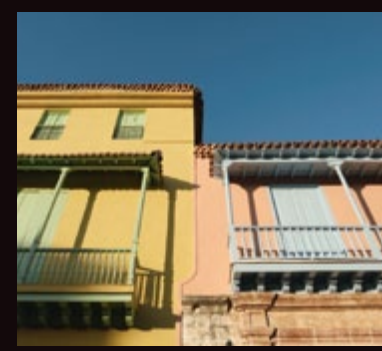


1/500sec. F2.0 ISO800  
FUJIFILM X-T20 + XF35mmF2.R WR / Norifumi Inagaki



1/1000sec. F4.0 ISO800  
FUJIFILM X-T20 + XF14mmF2.8 R / Norifumi Inagaki





**MONOCHROME**  
 Similar to ACROS, this standard monochrome mode offers three filter options (Yellow, Red and Green) all delivering an elegant monochrome look.

**PROVIA**

Standard mode for general photography that delivers radiant skin tones and vibrant colors, just as you remember them.

**ASTIA**

Offering soft tones and high saturation, this option showcases radiant skin tones and smooth gradation. It is ideal for outdoor portraits when you want to add punch to the background.

**ACROS**

A new monochrome mode, designed to produce fine textures, deep blacks, and smoother gradation. It provides ultra-fine details at low ISO and graininess at high ISO.

**PRO Neg. Std**

Produces accurate skin tones in portraits shot under controlled light. Its softer, gentler saturation makes it useful for general snapshots.

**PRO Neg. Hi**

For high contrast portraits, even in overcast conditions or indoor situations with flat light. Skin tones are naturally reproduced, setting it apart from other Film Simulation options.

**Velvia**

Combines high saturation and accurate colors to produce vivid images. Ideal for landscapes and wildlife, while its deep blacks also make it perfect for night scenes.



**CLASSIC CHROME**

Delivers subtle colors and beautifully muted tones, designed primarily to deliver a look reminiscent of vintage reversal film.



**SEPIA**

Adds a warm brown tone across the frame to simulate a nostalgic, sepia look. Works best on retro subjects.

**FUJIFILM**  
 Value from Innovation

**F I L M S I M U L A T I O N**

Fujifilm's Film Simulation modes have been perfected over 80 years of photographic film manufacturing. They enable you to produce rich colors and tones perfectly suited to the subject, shooting conditions and your own creativity, just as if you were swapping between different photographic films. Images are delivered in premium JPEG quality. A total of 15 Film Simulation options are available including PROVIA, which faithfully reproduces colors exactly as you remember each scene, Velvia, ASTIA and CLASSIC CHROME, which focus on artistic effects, PRO Neg. Hi / PRO Neg. Std for outstanding reproduction of natural skin tones and the new ACROS for a traditional monochrome look.



# LENS



## X-T20 RECOMMENDATIONS FULL LINE UP



**XF14mmF2.8 R**

Ultra wide-angle lens delivering sharp, distortion-free images



**XF18mmF2 R**

Compact wide-angle lens, perfect for snapshots



**XF23mmF2 R WR**

All new 23mm lens with high-speed AF and weather / dust resistance



**XF27mmF2.8**

Light pancake lens that combines light weight and compact dimensions with excellent image quality



**XF35mmF2 R WR**

Standard lens characterized by beautiful bokeh and outstanding sharpness



**XF50mmF2 R WR**

Latest mid-telephoto lens, designed for portability



**XF18-55mmF2.8-4 R LM OIS**

Standard zoom lens renowned for its premium image quality



**XF55-200mmF3.5-4.8 R LM OIS**

Telephoto zoom that produces sharp, crisp images across its zoom range

### Prime lenses

- XF14mmF2.8 R** Compact and lightweight ultra wide-angle lens
- XF16mmF1.4 R WR** Large aperture wide-angle lens with close-up capability
- XF18mmF2 R** Light and convenient lens to carry everywhere you go
- XF23mmF1.4 R** Offering creamy bokeh and manual focusing
- XF23mmF2 R WR** Compact lens delivering premium image quality and a natural angle of view
- XF27mmF2.8** The lightest lens in the line up
- XF35mmF1.4 R** Sharp standard lens that also produces beautiful bokeh
- XF35mmF2 R WR** Elegant design and weather/dust resistance
- XF50mmF2 R WR** Light, stylish mid-telephoto lens
- XF56mmF1.2 R** Portrait lens with the widest aperture in the line up
- XF56mmF1.2 R APD** Produces soft bokeh thanks to the use of an APD filter
- XF60mmF2.4 R Macro** 0.5x magnification macro lens with impressive sharpness
- XF90mmF2 R LM WR** Portrait lens with beautiful bokeh at wide apertures

### Zoom lenses

- XF10-24mmF4 R OIS** Offers a dynamic view and a constant F4 across the zoom range
- XF16-55mmF2.8 R LM WR** Flagship standard zoom with the constant F2.8 aperture
- XF18-55mmF2.8-4 R LM OIS** Lightweight and compact zoom for excellent portability
- XF18-135mmF3.5-5.6 R LM OIS WR** Superzoom lens with five-stop image stabilization
- XF50-140mmF2.8 R LM OIS WR** Telephoto zoom with the F2.8 aperture across its zoom range
- XF55-200mmF3.5-4.8 R LM OIS** Telephoto shooting, without the bulk
- XF100-400mmF4.5-5.6 R LM OIS WR** Flagship ultra-telephoto zoom featuring five-stop image stabilization
- XC16-50mmF3.5-5.6 OIS II** Lightweight standard zoom with advanced macro capability
- XC50-230mmF4.5-6.7 OIS II** Simple to use 4.6x telephoto zoom

### Teleconverter

- XF2X TC WR** Enhance the reach of selected XF lenses
- XF1.4X TC WR** Enhance the reach of selected XF lenses

### Mount Adapter

- M MOUNT ADAPTER** Converts M Mount lenses for use on X Mount cameras



# ACCESSORIES BODY



Shoe-mount flash  
EF-X500



Shoe-mount flash  
EF-42



Shoe-mount flash  
EF-20



Shoe-mount flash  
EF-X20



Stereo microphone  
MIC-ST1



Remote shutter release  
RR-90



Macro extension tube  
MCEX-16



Macro extension tube  
MCEX-11



AC power adapter  
AC-9V



Battery charger  
BC-W126



DC coupler  
CP-W126



Battery  
NP-W126S



Hand grip  
MHG-XT10



Hand strap  
GB-001



Half leather case  
BLC-XT10



Protector filter  
PRF-58, etc.



X-T20  
Silver



X-T20  
Black

