

Point and shoot simplicity



Black



Silver



Blue



Red



Pink



14 Megapixels

Fujinon **5x** Zoom Lens

2.7" LCD (230,000 dots)



* ISO3200 is effective in S mode



AA Battery Powered

FinePix AX300 is powered by AA batteries available anywhere, freeing you from worry about forgetting the battery charger or running out of power on your travels.

14 Megapixels

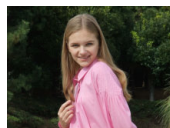
An impressive 14 megapixel resolution never misses the finest details of your subject, capturing sharp and clear images in vivid colors, even when printed in large size.

Fujinon 5x Zoom Lens

World renowned Fujinon lens technology, as used in space satellite, TV/film, security and compact cameras, provides a great wide angle and 5x optical zoom.



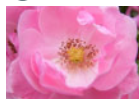
1x



5x optical zoom

SR AUTO Automatic Scene Recognition

Framed scenes are automatically detected and selected into appropriate camera settings: Portrait, Landscape, Night, Macro, Night Portrait, and Backlit Portrait.



[[Hand Icon]] Digital Image Stabilization

Digital Image Stabilizer reduces blurring caused by camera shake using high sensitivity and fast shutter speed. Captures crisp and clear images of moving subjects.



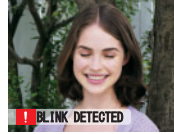
Conventional digital camera



FinePix AX300

[[Smiley Face Icon]] Blink Detection

The camera warns you when people in the frame blink, reducing lost photo opportunities.



Lost photo opportunity



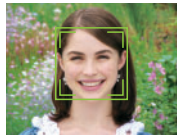
FinePix AX300

[[Smiley Face Icon]] Smile & Shoot

The Smile & Shoot mode automatically releases the shutter when the smile appears so you won't miss an adorable smile the moment it happens.



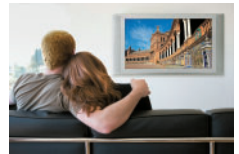
Conventional digital camera



FinePix AX300

HD MOVIE HDTV Compatible Movies

FinePix AX300 can produce both photos and movies in high-definition 16:9 format, letting you discover the impact of full-screen HDTV images.



[[Camera Icon]] Image Search

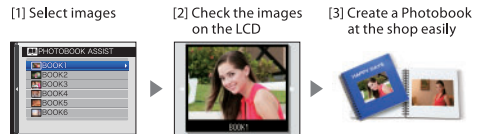
With the convenient Image Search function, you can search photos by Date, Face, Scene, Type of Data or Favorite Rank, by Upload Mark.



by Favorite	by Scene
by Face	by Type of Data
by Date	by Upload Mark

[[Book Icon]] Photobook Assist

With the Photobook Assist function, you can easily create a Photobook by sorting and tagging images.



The above is a rendered image

Specifications

Number of effective pixels ^{*1}	14.0 million pixels
Image sensor	1/2.3-inch CCD with primary color filter
Storage media	SD memory card / SDHC memory card ^{*2}
File format	Still image: JPEG (Exif Ver 2.3 ^{*3}) / (Design rule for camera file system compliant / DPOF - compatible)
Number of recorded pixels	Still image: L <4:3> 4288 x 3216 <3:2> 4288 x 2864 <16:9> 4288 x 2416 M <4:3> 3072 x 2304 <16:9> 3072 x 1728 / S <4:3> 2048 x 1536 <16:9> 1920 x 1080
Lens	Fujinon 5x optical zoom lens
Lens focal length	f=5.9 - 29.5 mm, equivalent to 33 - 165 mm on a 35 mm camera
Digital zoom	Approx. 6.7x (up to approx. 33.5x, with 5x optical zoom)
Aperture	F3.3 / 8 (Wide) F5.9 / F14.4 (Telephoto) with ND filter
Focus distance (from lens surface)	Normal: Wide: Approx. 45 cm to infinity / 1.5 ft. to infinity, Telephoto: Approx. 80 cm to infinity / 2.6 ft. to infinity Macro: Wide: Approx. 10 cm - 80 cm / 3.9 in. - 2.6 ft., Telephoto: Approx. 60 cm - 1.0 m / 2.0 ft. - 3.3 ft.
Sensitivity	Auto / Equivalent to ISO 100 / 200 / 400 / 800 / 1600 / 3200 (Standard output sensitivity) ISO 3200 is effective in S mode.
Shooting modes	SR Auto, Auto, P Movie, Natural Light & with Flash, Natural Light, Portrait, Baby, Smile & Shoot, Landscape, Motion Panorama, Sport, Night, Night (Tripod), Fireworks, Sunset, Snow, Beach, Party, Flower, Text
Shutter speed	(Auto mode) 1 / 4 sec. to 1 / 1400 sec. (All other modes) 8 sec. to 1 / 1400 sec.
LCD monitor	2.7-inch, approx. 230,000 dots, TFT color LCD monitor, approx. 96% coverage
Movie recording	1280 x 720 pixels / 640 x 480 pixels / 320 x 240 pixels (30 frames / sec.) with monaural sound. Zoom function can be used. Sounds will not be recorded during optical zoom operation.
Power supply ^{*4}	2 x AA type alkaline batteries (included) / 2 x AA type Ni-MH rechargeable batteries (sold separately)
Dimensions	93 (W) x 60.2 (H) x 27.8 (D) mm / 3.7 (W) x 2.4 (H) x 1.1 (D) in. (Minimum depth: 22.0 mm / 0.9 in.)
Weight	Approx. 119 g / 4.2 oz. (excluding accessories, battery and memory card)

^{*1} : Number of effective pixels: The number of pixels on the image sensor which receive input light through the optical lens, and which are effectively reflected in the final output date of the still image.

^{*2} : Please see the Fujifilm website to check memory card compatibility.

^{*3} : Exif 2.3 is a digital camera file format that contains a variety of shooting information for optical printing.

^{*4} : Manganese dry, nickel-cadmium and lithium AA batteries cannot be used with this product.

For more information, please visit our website:
http://www.fujifilm.com/products/digital_cameras/index.html

Specifications are subject to change without notice.

All sample photos are simulated images.