

FASTBACK® HARDCOVER GUIDE™

The Fastback® Hardcover Guide™ lets anyone make a professional-quality hardcover book in just seconds. With Fastback Hardcovers™, assembly is simple. Fastback Hardcovers are designed with the adhesive built in, eliminating messy glue pots.

- Simple and fast book assembly, less than 20 seconds
- Ensures consistent registration of the book block with the Fastback Hardcover



PRODUCTION WORKCELL SPECIFICATIONS

- Page Capacity: 10 -100 sheets (up to 0.5" (1.27cm) thick)
- Book Sizes: Max. 12" X 13.6" (30.48cm x 34.54cm); Min. 4" x 4" (10.16cm x 10.16cm)
- Estimated Production Capacity for Single Workcell: 50-60 books per hour

Fastback® Splitter S41

Dimensions: 20.5" W x 14.5" H x 16.5" D
(52.07cmW x 36.83cmH x 41.91cmD)

Max. Weight: 65 lbs (29.5 kg)

Cycle Time: 35 seconds

Power: USA - 2.5, 115V, 50/60Hz,

Europe - 1.25A, 220-240V, 50/60Hz

Agency Approvals: CE, TUV, CTUV

Fastback® Binder FB25

Dimensions: 25" W x 9.5" H x 22" D
(63 cmW x 24 cmH x 56 cmD)

Max. Weight: 55 lbs (25 kg)

Binding Time: 35-45 seconds

Power: USA - 7A, 115V, 50/60Hz,

Europe - 3.5A, 220-240V, 50/60Hz

Agency Approvals: CE, UL, TUV, CUL

Fastback® Hardcover Guide™ HCG-2

Dimensions: 20.75" W x 3.125" H x 14" D (52.7 cmW x 7.9 cmH x 35.6 cmD)

Compatible with all Fastback Hardcovers™



Designed, Engineered and Made in the USA.

POWIS | Production Workcell™



POWIS

© POWIS PARKER INC. 2010
Specifications, drawings, photographs and design are for illustrative purposes only and are subject to change without notice.

FOR INFORMATION ON ALL FASTBACK
PHOTOBOOK EQUIPMENT AND
SUPPLIES, PLEASE CONTACT THE
POWIS PHOTOBOOK SALES TEAM.
EMAIL: customerservice@powis.com

800.321.2463
510.848.2463
www.powis.com

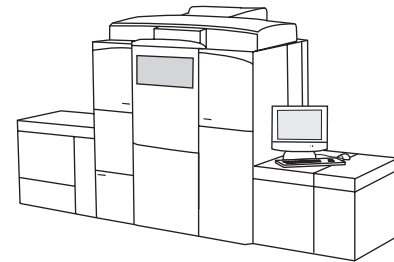
L1001

HOW A BOOK IS MADE



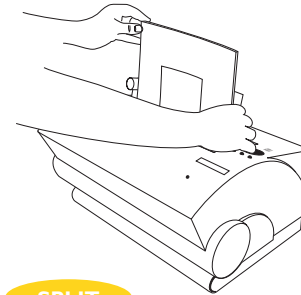
DESIGN

Photos and text are gathered and designed using a page layout application.



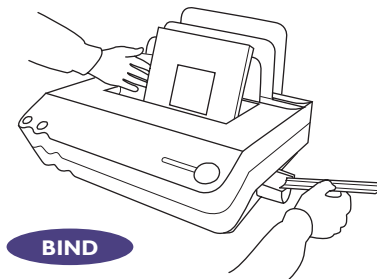
PRINT

Book contents are printed. Together with the endleaves, these sheets are called the book block.



SPLIT

The book block is processed with the Splitter to prepare the edges of the paper for binding.



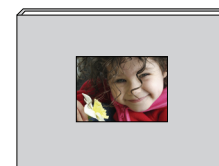
BIND

Endleaves are added and placed in the Model 25 binder, and a CP binding strip is inserted into the machine. The binder does the rest.



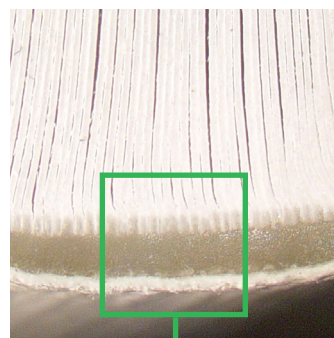
ASSEMBLE

The finished book block is attached to the adhesive panels of the Fastback Hardcover™. The Fastback® Hardcover Guide is used to accurately align the contents and the cover.



FINISHED!

StitchFree™ Binding TECHNOLOGY



ADHESIVE PENETRATES COATED PAPER SHEETS

Powis Parker introduces StitchFree™ Binding — A unique, advanced technology that provides exceptional bind strength and durability for the high-gloss, coated papers typically used in glossy book production. Traditional binding using side sewing or metal stitching creates strong binds, but these methods eliminate a portion of the page at the binding edge. The alternative, perfect binding, uses notching or milling to help improve the bind, but it cannot match stitching for bind strength. Powis Parker's StitchFree™ method improves on both systems by opening the interior fibers of the paper, creating channels for the adhesive to penetrate the paper. This firmly attaches the binding strip to the individual sheets and ensures that every sheet is bound regardless of coating or toner. StitchFree binding does not damage the paper or reduce the printable area of the page, so full spread images are aligned and maintained across the pages.

FASTBACK® SPLITTER™

The Fastback Splitter™ quickly and easily prepares glossy, coated paper. Micro-blades actually open the interior of the paper, creating channels that allow the adhesive to attach to the raw paper fibers instead of the exterior coating. High gloss papers that will not bind well with other systems can be bound using the Fastback Splitter™. The printable area of the page is not damaged or lost.

- Works with most types of coated and glossy papers
- Automatically adjusts to varying book thicknesses
- Enables a strong and durable bind to preserve documents for a lifetime
- Allows borderless printed pages
- Simple tabletop operation with no mess.



FASTBACK® SPLITTER™ - PATENTS PENDING

FASTBACK® MODEL 25 BINDER

The Fastback® Model 25 Binder is a production ready, tabletop binding machine specifically developed for the demands of binding coated paper. In conjunction with the Splitter, the Model 25 binds books easily and economically, creating a StitchFree™ elegant bind. The Model 25 adjusts to different book thicknesses automatically, resulting in a bind that is professionally finished, yet flexible.

- A single production cell can easily support a high-volume digital press.
- Allows for full-bleed printing and borderless images
- Automatically adjusts to varying book thicknesses
- Strong, durable bind with coated paper
- Simple and economical to operate
- Compact tabletop workspace
- Uses patented CP Strips



FASTBACK® MODEL 25 BINDER